

If a jobs worth doing.....

.....it's worth doing with Edgeline



*Portaferry RNL Station
Material; TECU Patina
Copper*

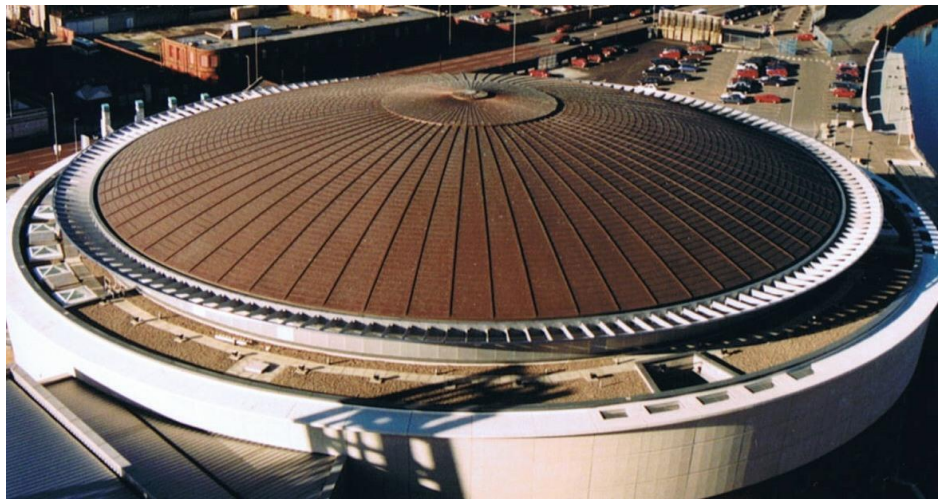
*Private House, Kilrea
Material; Rheinzink Pre-
Weathered Pro*



*Private House, Maghera
Material; Rheinzink Pre-
Weathered Pro*



*Waterfront Concert Hall,
Belfast
Material; TECU Classic
Copper*



*Private House, Kilrea
Material; Rheinzink Pre-
Weathered Pro*



*Private House, Omagh
Material; Rheinzink Graphite
Grey Pro*



References (Architects);

- *McGarry Moon Architects, Kilrea*
- *Sean McLaughlin, Londonderry*
- *P4McG Architects, Londonderry*
- *Robinson McIlwaine, Belfast*
- *RPP Architects, Belfast*
- *Consarc Architecture, Belfast*
- *Bell Architects, Coleraine*
- *McGurks Architect, Magherafelt*

References (Architects);

- *2020 Architects, Ballymoney*
- *HBK Architects, Belfast*
- *Alan Jones Architects, Randalstown*
- *Robinson McIlwaine, Belfast*
- *McAdam Design, Belfast*
- *Tomas O'Hare Architects, Belfast*
- *Ostick & Williams Ltd, Belfast*
- *Kennedy, Fitzgerald & Ass, Belfast*



Company Profile

Background

Edgeline Contracts were a roofing and cladding company established under the ownership of Brian Edgerton. This company had been completing various metal roofing and cladding projects using a wide range of materials throughout Ireland. Brian Edgerton had been a key figure to the introduction of specialist metal roofing and cladding throughout Ireland by importing materials such as Rheinzink into the Irish market place. Right until his death in March 2011, he had a keen interest in the development of specialist roofing & cladding while still importing metals into Ireland through his Dublin base. In 2000, Ivan Forsythe and John Wills took over the company from Brian Edgerton renaming it Edgeline Metal Roofing Ltd with the aim of developing within the specialised roofing and cladding sector. To achieve this, specialist equipment and materials were imported from around the world and professional training was undertaken by each employee to ensure that new company of Edgeline Metal Roofing Ltd had the know-how and equipment to succeed.

In 2005 John Wills retired from the company leaving Ivan Forsythe as the sole Director, following which, Sylvia Forsythe was appointed an associate Director.

Growth

Since 2000, Edgeline Metal Roofing Ltd has become market leader throughout Ireland in metal roofing/cladding. Since its inception in 2000 Edgeline Metal Roofing Ltd has seen its annual turnover grow to £2m+. This has been achieved through a strategy of: -

- Technical & practicable know-how in detail, design, application and finish of metals
- Guaranteed roofing/cladding systems with metal manufactures warranties as well as our own warranties on fitting service
- Research and development of new and improving systems to meet building regulations
- Achieving the impossible with roof/cladding shapes & sizes
- Efficient and effective on-site delivery and application of materials
- Backup systems in conjunction with suppliers
- Direct chain of management to deal with any problems
- Operative training in all aspects of specialist metal works through suppliers only training; which enables us to have the most experienced workforce in metal roofing/cladding in Europe
- Delivering an effective safety policy
- A quality policy to ensure each client/contractor is completely satisfied with the finished product
- And finally; taking pride in our work and what we have achieved whilst trying to encourage growth in the market

The Company today

Today, Edgeline Metal Roofing Ltd has a work force eager to meet client's needs and requirements on either small or large projects. Our aim is that our customers will be totally satisfied with the end product; this has given us edge over many other companies/materials.

“A good job is often forgotten about; a bad job is talked about for years”
(Ivan Forsythe MD, Edgeline Metal Roofing Ltd)

Our reputation has been secured through quality with many of our leads directly following from excellent recommendations on completed projects, allowing us to further encourage and expand interest in this specialist market. Today we specialise in supply and fit of the following roofing and cladding materials:-

- Rheinzink Roofing, Cladding & Gutter work (*approved contractor under Rheinzink*)
- Rheinzink Solar Roofing Systems (*approved contractor under Rheinzink*)
- VMZinc Roofing, Cladding & Gutter work (*approved contractor under VMZinc*)
- TECU Copper Roofing Cladding & Gutter work (*approved contractor under TECU/KME*)
- Luvata Copper Roofing, Cladding & Gutter work (*approved contractor under Luvata*)
- Alcan Falzonal Aluminium Roofing and Cladding (*approved contractor under Alcan*)
- Uginox Terne Coated Stainless Steel (*approved contractor under Uginox*)
- VeroZinc Roofing, Cladding & Gutter work (*approved contractor under Norkem*)
- Alkor PVC Membrane roofing systems (*approved contractor under Alkor*)
- Vitrabond Aluminium Composite Panel (*approved contractor under Valcan*)
- Puren Insulation systems for metal roofing/cladding
- Lindab rain water systems
- MetDeck insulation system (*approved contractor under Kingspan/Metal Processors*)

Quality Policy

Quality is one of our top priorities. Our suppliers can guarantee materials supplied up to 20 years and our labour is guaranteed up to 10 years. This can be increased if required. We ensure quality of the finish by being involved with the architects/clients at the inception stage of a project. This means we can accommodate most if not all, technical issues of design etc. We have become a reference point of contact for architects throughout Ireland requesting information on the application of specialist metal roofing/cladding as they know we have the knowledge and experience of these materials. We also offer help in the design and roof build-up by means of supplying architects with AutoCAD details and holding informal meetings to discuss issues.

All our site operatives have been trained by our suppliers (i.e. Rheinzink, KME TECU etc) to certificate level in the use and fitting of the specialist roofing and cladding materials that we supply. This provides Edgeline Metal Roofing Ltd with a high level of workmanship mixed with individual operative's experience. Also, all operatives have, for inspection, CSCS (or CSR) cards indicating that they have completed regulatory Health and Safety training.

Edgeline Metal Roofing Ltd now trains operatives from France, UK, Hungary, Slovakia and Ireland in metal roofing/cladding. The students from France stay with us for 12 months as we

teach them the trade. This is only 1 year of a 4 year course that these students must complete in order to become a specialist metal roofer.

Should there be a dispute regarding quality of workmanship/material finish, our suppliers can act as moderators and site inspections can be arranged to be carried out on behalf the client/contractor. We are one of a few Specialist contractors who are members of the MRCA as well as FTMRC who also can act as moderators in cases of disputes. The role of these associations is mainly to keep abreast of new legalisation, health & safety issues and policies.



Environmental Policy

As society makes determined moves towards sustainability, construction has a very important role to play within this new agenda, not only because of its economic and social contribution, but also because of its impact on the quality of our lives, our comfort and safety. While the building industry provides 5% to 10% of worldwide employment and generates 5% to 15% of GDP (Gross Domestic Product), the built environment accounts for 40% of energy consumption, 40% of CO2 emissions, 30% of the consumption of natural resources, 30% of waste generation and 20% of water consumption.

The future global challenge for the construction industry is clearly to meet the world's growing needs while at the same time limiting the impact of its burdens by drastic improvement of its activities.

In construction, various metals, such as Rheinzink, have been developed as a material of choice and offers a wide range of solutions that can make buildings more energy efficient, less costly to operate and more comfortable.

Edgeline Metal Roofing Ltd strongly believe in raising values for green building and are committed to helping deliver the benefits that our solutions bring to our customers, buildings and the buildings' owners.

Unlike most other roofing and cladding contractors, we manufacture our material on-site in order to reduce waste levels to less than 8% of total material used. Any waste material is separated into various waste bins at our workshop and then recycled through the proper channels to ensure that the environmental impact is reduced.

Please find as follows a table showing percentage of the average recyclability for the roofing/cladding material that we supply: -

Material	Recyclability
Rheinzink	97 to 100%
KME TECU/Luvata Copper	100%
Uginox Terne Coated Stainless steel	100%
Alcan Aluminium	100%
Alkor Draka PVC membrane	90 to 100%

Company Roles

Managing Director, Ivan Forsythe oversees the following: -

- Day to day business activities
- Meeting with Architects/clients/contractors to discuss detailing/design
- Enforcement of Company Health and Safety policy
- Management of any quality issues with workmanship/material finish

Associate Director, Sylvia Forsythe has day-to-day responsibility for Financial Accounts and deals with the following: -

- Invoicing
- Account details
- Payments

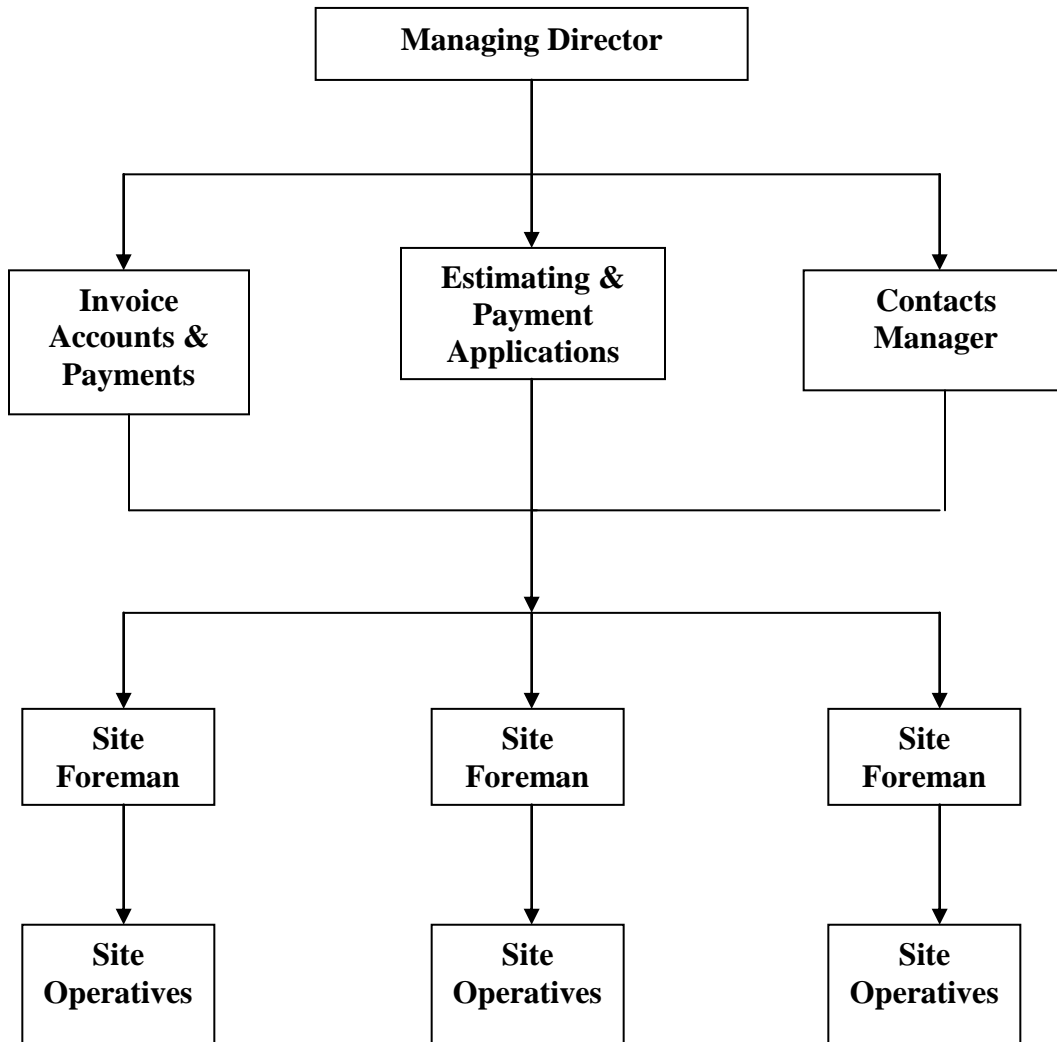
Keith Anderson has overall responsibility for Estimating & Payment Applications that includes: -

- Completing Bills of Quantities
- Sending out monthly evaluations
- Any AutoCAD details that may be required
- On-site measurement for evaluations
- Specifications for design

Kenny Brown is the Contracts Manager with day-to-day responsibility for: -

- Allocation of labour to projects
- Meeting with Architects/clients/contractors to discuss detailing/design
- Ordering materials for projects

Management Structure



Managing Director – Ivan Forsythe
Accounts – Sylvia Forsythe
Estimating – Keith Anderson
Contracts Manager – Kenny Brown
Site Foreman – Keith Forsythe
Site Foreman – Steven Stewart
Site Foreman – Albert Lyttle

Project Profiles/List

The following list is an example of some of the projects that Edgeline Metal Roofing Ltd. has completed over the last number of years. Should you require more information on these, please feel free to speak to Keith Anderson.

Royal Canal Court, Pelletstown, Dublin

Contractor: Ballymore Construction
Value of Work: €1.7m
Dates: From May 2004 to January 2007
Job Description: 10 Apartment blocks to the North of the city to which EMRL supplied and fitted Rheinzink Cladding to the penthouse levels (8,000ms of cladding). Also supplied and fitted was Terracotta Tile rainscreen system to the external leaf of the buildings (4,500ms of cladding)

Corn Market, Distillery Road, Dublin

Contractor: Glenbard Construction
Value of Work: €0.7m
Dates: From September 2006 to July 2007
Job Description: New townhouses and apartment blocks that were covered in Rheinzink Roofing and Cladding (2,400ms of cladding & roofing)

Muckamore Abbey Hospital Phase I

Contractor: Heron Brothers
Value of Work: £260,000.00
Dates: From May 2005 to March 2006
Job Description: New forensic blocks to Muckamore hospital that included 2,200ms of Rheinzink Roofing and Cladding

Loreto College, Miford, Co Donegal

Contractor: Woodvale Construction
Value of Work: €0.7m
Dates: From June 2005 to February 2007
Job Description: Complete roof/cladding to new school building. This included 5,500ms of Rheinzink Roofing and Cladding.

Bangor, RSCF

Contractor: Heron Brothers
Value of Work: £170,000.00
Dates: From July 2005 to April 2006
Job Description: Falzonal Aluminium roofing system to the new Regional Secure Care Facility (Roof coverings approx 1,500ms)

Phoenix Park Re-development (formally the Race Course), Dublin

Contractor: Flynn & O'Flaherty
Value of Work: €5m
Dates: From March 2005 and being continued
Job Description: Rheinzinc and Copper cladding to apartment buildings, work is still ongoing.

Muckamore Abbey Hospital Phase II

Contractor: Heron Bro's
Value of Work: £215,000.00
Dates: From Oct 2007 to Feb 2008
Job Description: new blocks of accommodation with Rheinzink roofing and cladding (1,200ms)

Omagh Arts Centre

Contractor: Gilbert Ash
Value of Work: £120,000.00
Dates: From May 2006 to Nov 2006
Job Description: Rheinzink roofing and cladding (1,000ms)

Galgorm Manor Hotel, Ballymena

Contractor: Patton Group
Value of Work: £54,000.00
Dates: From May 2006 to July 2007
Job Description: Rheinzink roofing and cladding to restaurant extension and day spa entrance (500ms)

Adelaide Street Development, Belfast

Contractor: Patton Group
Value of Work: £85,000.00
Dates: From Oct 2006 to Aug 2007
Job Description: Rheinzink roofing and cladding to levels 8-10 of new hotel and office blocks

St Oliver's Plunkett's Church, Portglenone

Contractor: Conway Brothers
Value of Work: £15,000.00
Dates: From Aug 2006 to Nov 2006
Job Description: Rheinzink Fascia and Soffit system to detailed curve.

New Library and Maths Buildings, Queens University, Belfast

Contractor: O'Hare & McGovern
Value of Work: £200,000.00
Dates: From Oct 2006 to May 2008
Job Description: Rheinzink Roofing and Cladding to high level roof lines

Rope Walk, Drogheda Co Louth

Contractor: Danny Culligan Construction
Value of Work: €75,000.00
Dates: From Aug 2007 to Nov 2007
Job Description: Rheinzink Roofing and Cladding to Penthouse levels

Newry Train Station, Translink station

Contractor: Felix O'Hare
Value of Work: £230,000.00
Dates: From Jan 2009 to Aug 2009
Job Description: Rheinzink Roofing and Cladding

SEC, Newry

Contractor: Felix O'Hare
Value of Work: £240,000.00
Dates: From Sept 2009 to March 2010
Job Description: Rheinzink Roofing and Cladding

ARC, Titanic Quarter, Belfast

Contractor: Harcourt Construction Ltd
Value of Work: £400,000.00
Dates: From Sept 2008 to Spet 2009
Job Description: Rheinzink Roofing and Cladding

RNLI Station, Portaferry

Contractor: Sloan Construction Ltd
Value of Work: £50,000.00
Dates: From March 2009 to May 2009
Job Description: TECU Patina Copper Roofing and Cladding

Limavady Civic Centre

Contractor: Heron Bro's Ltd
Value of Work: £55,000.00
Dates: From Aug 2009 to Feb 2010
Job Description: Rheinzink Roofing and Cladding

Roden Street, Belfast Housing Association

Contractor: Braidwater
Value of Work: £100,000.00
Dates: From Aug 2009 to Sept 2010
Job Description: VeroZinc Roofing and Cladding

Former Edgewater Hotel, Portstewart

Contractor: O'Kane Devine Ltd
Value of Work: £400,000.00
Dates: From Sept 2008 to May 2009
Job Description: TECU Patina Copper Roofing and Cladding

T&O Facility Craigavon Area Hospital

Contractor: Farrans
Value of Work: £50,000.00
Dates: From Aug 2009 ongoing
Job Description: Falzonal Aluminium & Rheinzink Roofing and Cladding

NUIG, Galway

Contractor: BAM/Stanta
Value of Work: €700,000.00
Dates: From Sept 2010 ongoing
Job Description: 3000ms Natural finished zinc cladding and AlkorPlan roofing system

Titanic Signature Building, Belfast

Contractor: Harcourt Construction NI
Value of Work: £550,000.00
Dates: From Aug 2010 to date
Job Description: 2800ms VMZinc Quartz roofing and cladding along with MetDeck insulation system

Five Ways Round-a-bout, Newry

Contractor: C Mehan Developments
Value of Work: £70,000.00
Dates: From Jan 2011 to date
Job Description: 750ms Falzonal Aluminium roofing and cladding system

Riddel Hall, QUB, Belfast

Contractor: Tracey Bro's
Value of Work: £70,000.00
Dates: From May 2011 to date
Job Description: 500ms TECU Bronze Copper roofing and cladding system

Little May St Development for Hamilton Architects

Contractor: Mascott
Value of Work: £210,000.00
Dates: From Sept 2010 to date
Job Description: 1400ms TECU Classic Copper roofing and cladding system with timber substrate

Awards

Edgeline Have completed many award winning projects over the years with the most recent being winner of Northern Ireland's with Angus Wannington's 'House of the year' in 2010 and also 3rd placed with another project with Steven Moon's house. Winner again in 2011 with 'Scotts on the Rocks'

Operatives Pension Scheme

All operatives are entered into the Construction First payment scheme which they have to option to opt out at any stage. This provides them with a pension when they turn 65 years old and 100% of our operatives are in the scheme for the long term gains/goals.

Company Tax Information

Edgeline Metal Roofing Ltd holds a CIS6 card Cert No. 2011721865301

Company Unique Tax Reference (UTR): 20117 21865

Company Registration Number: 00039378

Suppliers:



Please visit our web site at www.edgelinemetalroofing.com to view some our work



*Limavady Civic Centre
Material; Rheinzink Pre-
Weathered*